



The Ardency Art Exhibition was conceived for the promotion and encouragement of the Arts within the surrounding community and to create a greater sense of community involvement in art.

Ardency Aroona in conjunction with Oatley 101 Society of Artists are pleased to present their 6th Ardency Art Exhibition. This year's judge will be Sally Ryan.

Sally Ryan is a classical painter who was inspired by the great masters such as Rembrandt, Repin and Vermeer to name a few. This passion led to her beginning her studies at The Julian Ashton Art School, Sydney and then to travel overseas to study at The Grand Central Academy in New York and Studio Escalier in Paris. Sally's mastery of graphite, charcoal and oils, shows itself in her work which is in the Classical Realistic Tradition of direct observation, beauty, harmony and skill, and involves years of rigorous training and dedication.

Her works have been hung in the Archibald, Doug Moran, Portia Geach, Black Swan, Parliament House Victoria and The Australian Embassy in Washington. Sally is also a member of the elite Portrait Artists Australia and as such has exhibited in their many exhibitions both here and overseas.

Now working as a tutor at The Julian Ashton Art School, Sally loves the journey of sharing her considerable skills with others who are on the wonderful journey, as well as working on her many and varied commissions which are in high demand.

The official opening and presentation of awards will take place at Ardency Aroona and will be by invitation ONLY for participating artists and sponsors.

**ENTRIES CLOSE:
FRIDAY 22ND FEBRUARY 2019**

ENTRY FORMS AND PAYMENT TO:

R Riley
47 Naranganah Avenue
GyMEA Bay, NSW 2227

Cheques made payable to Oatley 101 Society of Artists Inc. Direct Deposit to Oatley 101 Society of Artists Inc BSB 032 151 Account 244092

DELIVERY OF ARTWORKS:

Ardency Aroona,
19 Wyralla Rd, Yowie Bay NSW
10am - 4pm, Wednesday 20th March 2019.
(No early or late deliveries of entries will be permitted)

**OPENING NIGHT AND AWARDS
PRESENTATION AT:**

Ardency Aroona. For participating artists by invitation only. RSVP is essential.

EXHIBITION VIEWING TIMES:

Friday 22nd March, 10am - 2pm
Saturday 23rd & Sunday 24th March, 10am - 4pm
ADMISSION FREE

COLLECTION OF ENTRIES:

Sunday 24th March 2019, 4pm - 6pm.
(No early or late collection of entries will be permitted).

ENQUIRIES:

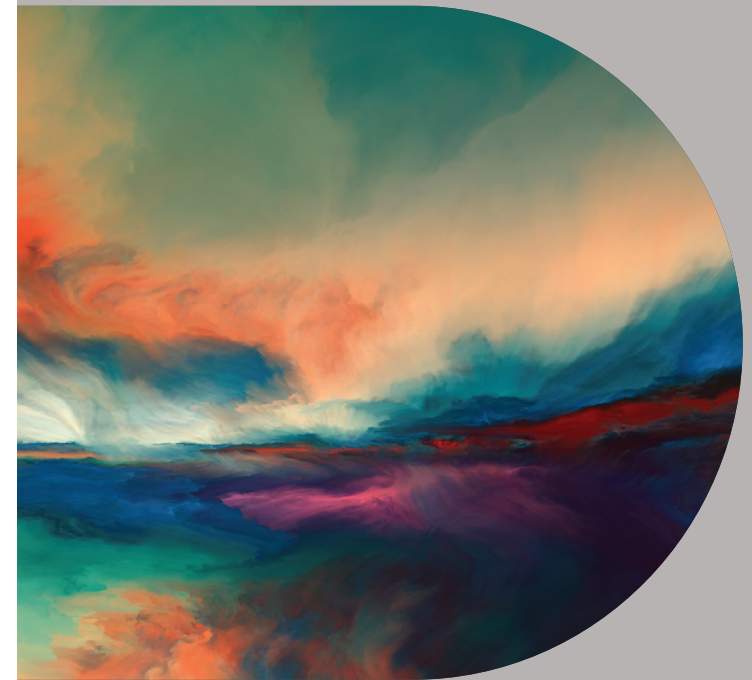
Jill Hamilton
Phone: 0410 634 295 or 9533 4298
Email: jill.ham.41@gmail.com
www.oatley101.com
www.ardency.com.au
ardency@lendlease.com



art exhibition

WILD & FREE

22nd - 24th March 2019



ARDENCY AROONA YOWIE BAY
19 Wyralla Rd Yowie Bay NSW 2228

JUDGE: Sally Ryan



art exhibition

WILD & FREE

Ardency Aroona is proud to present its 6th Annual Art Exhibition held at our Yowie Bay Resort. The event is open to all artists resident in Australia and will attract hundreds of visitors keen to see the many magnificent works on display.

This year's theme of "Wild and Free" describes life and all its wonders. Magnificent landscapes, oceans, mountains and plains - the beauty of animals and plants - wonderful experiences and adventures and the characters we meet along the way.

The scope for artists is unlimited and we look forward to having an exceptional exhibition.

AWARDS

Ardency First Prize – Acquisitive \$5000

Sponsored by Ardency Resorts by Lendlease. Ardency Aroona will acquire the winning work.

Southern Highlands Winery Prize \$1000

Sponsored by Southern Highlands Winery

Chris Walsh Prize \$1000

Sponsored by Chris Walsh, of Gibson Real Estate.

Décor Advice & Abbey Electrical Prize \$1000

Sponsored by Irene Jensen of Décor Advice & Abbey Electrical.

SVSR Group Small Works Prize \$1000

Sponsored by SVSR Group

Oatley 101 Society of Artists Prize \$1000

Sponsored by and only open to members of the Oatley 101 Society of Artists Inc.

Winsor & Newton,

Liquitex and Conté à Paris Prize \$1000

Art Materials voucher sponsored by Winsor & Newton, Liquitex and Conté à Paris.

CONDITIONS OF ENTRY

ELIGIBILITY/AWARDS: All prizes at the Exhibition are open to artists resident in Australia, whilst the Oatley 101 Society of Artists Prize is for Members of the Society who are financial members as at the 31st December 2018.

All entrants must be aged 18 years and over.

SUBJECT: All works must be inspired by the THEME, Wild & Free.

ENTRIES: Entries must be the original work of the exhibitor, completed within the previous two years, and not have been entered in any previous Ardency Art Exhibition. Copies, diptychs, paintings on glass, ceramics, photo-reproductions, computer-assisted or 3-dimensional works will NOT be accepted. The works may be in any medium. Work must not have been under tutelage and must be in accordance with copyright law.

SIZE: Works are not to exceed 400cm total outside perimeter of frame. Small Works are not to exceed 150cm total outside perimeter of frame.

FRAMING: Works must be dry, professionally framed and ready to hang with cord or plastic-coated wire. Deep edged stretched canvas, i.e. 35mm-40mm deep, painted on all sides and stapled at the back are acceptable. Narrow edge canvas is not acceptable.

Paintings with screw eyes or bare wire will not be accepted. Any artwork requiring repair or deemed unsuitable for hanging will not be accepted.

NUMBER OF ENTRIES: Maximum of 2 works per artist.

HANDLING FEE: To enter the Exhibition, the handling fee is \$25 per artwork for non members or \$20 for Financial Members of Oatley 101 Society of Artists Inc. This is a non refundable fee.

SALE: All works must be for sale. All sales are subject to 25% commission to Oatley 101 Society of Artists Inc.

GST: Your GST position must be completed on the Entry Form.

HOBBYISTS must supply a "Statement by a Supplier Form" with the completed Entry form. Available at www.oatley101.com

ACQUISITION: Ardency by Lendlease, will acquire the work winning the Ardency First Prize for the prize money only.

JUDGING: All entries accepted will be viewed by the Judge, but not all will necessarily be hung. The Judge's decision is final and no correspondence will be entered into. No refunds for works not hung.

ENTRY FORM: Entry Form and fees to be sent to: R Riley, 47 Naranganah Avenue, Gymea Bay, NSW 2227 by Friday 22nd February 2019. Late entries will not be accepted. Cheques payable to Oatley 101 Society of Artists Inc. Direct Deposit to Oatley 101 Society of Artists Inc BSB 032 151 Account 244092

RESUME: Artists are encouraged to include their resume with their Entry Form.

IDENTIFICATION: The artist's name, title of work, medium and price must be clearly marked on the back bottom right hand corner of each work. Please use enclosed labels.

TITLE: Untitled artwork is unacceptable. Title must be no more than 20 characters.

INSURANCE: Exhibitors are responsible for their own insurance of works. All reasonable care will be taken but no responsibility is accepted for loss, theft or damage while in custody or transit, or for works not collected on Sunday 24th March 2019, by 6pm.

PUBLICITY: Exhibitors shall allow their work to be reproduced for promotional purposes or display or for use by the media.

DELIVERY: Deliver artworks to Ardency Aroona, 19 Wyralla Road, Yowie Bay NSW 2228 on Wednesday 20th March 2019, 10am - 4pm. No early or late deliveries accepted. NOTE: Artworks will not be accepted or returned by postal delivery.

COLLECTION OF ENTRIES: All entries (hung & not hung) will only be available for collection on Sunday 24th March between 4pm and 6pm. Please bring receipt. Ardency Aroona Yowie Bay & the Oatley 101 Society of Artists Inc. will not be responsible for works not collected after this time.

After 6pm on Sunday 24th March uncollected works will be charged \$50 late pick up fee and will be available for collection on Wednesday 27th March at Oatley 101 Society of Artists Oatley, 101 Woronora Parade, Oatley West, NSW 2223.

INTERPRETATION OF CONDITIONS: In the event of a dispute regarding the interpretation of conditions, the decision of the Organising Committee SHALL BE FINAL.