

OATLEY 101 SOCIETY OF ARTISTS INC.

NEWSLETTER

Issue 298

December 2025

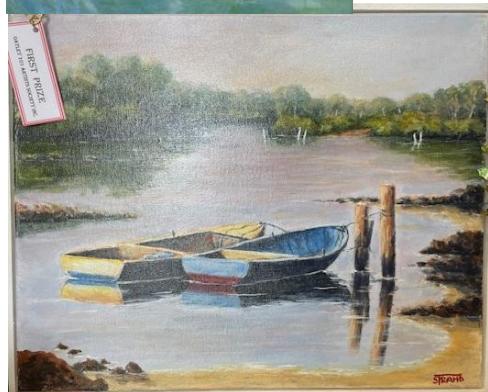
What a great roll up we had for the December Exhibition and Members Christmas

Party. It was good to see so many people coming through despite the heat on Saturday. I would like to thank everyone who contributed to the success of the Exhibition. In particular, the 36 artists who contributed the 131 artworks on display (see photos on following pages). Our thanks to Trish Maclachlan who provided the water colour demonstration outside in Saturday's extreme heat and also to Michael Dunn for his acrylics demonstration on Sunday. They were both very much appreciated.

I would like to thank the Committee for their time and efforts in planning and executing the exhibition. Last but not least, I would like to thank all of the members and non-members who



volunteered their time to assist in the various tasks such as setup/take down, coffee shop, cash desk, etc. Having three prizes in the raffle attracted a lot of interest. Our thanks go to John Strand and Cheryl McDonell for donating their artworks as prizes (shown here). Congratulations to Moira, Jasmine and Byron who won 1st, 2nd and 3rd prizes respectively in the raffle. We look forward to continued success with our 2026 exhibitions – June Half price Exhibition 14th & 14th of June, the Members Exhibition to be held the 12th, 13th and 14th September and the December Exhibition on the 6th and 7th December. We would appreciate your help at each of these if possible.



Entries for the Combined Art Societies of Sydney's 2026 Art of Sydney Awards Exhibition have now closed.

Venue is St. George Motorboat Club, Sans Souci on the 2nd, 3rd, 4th, 5th February 2026. Anyone who is interested in helping hang the artworks, can they please get in touch with Shirley.

Check out Robyn's Plein Air report for November which was held at Barangaroo and also the December Plein Air Report held at Bundeena. The next expedition

is 12th February at Audley Weir.

Workshops for 2026 are being prepared and the likely program, yet to be confirmed, may include Julie Simmonds – Watercolours, Paul McCarthy – Acrylic and Guy Troughton – water colour/landscape. More information to follow.

A few reminders before I close - membership renewals are due 1st February 2026, Life Drawing returns 2nd February, Wednesday Social Painters return 4th February and Portrait Classes 5th of February. Finally, I would like to take this opportunity to wish you a very merry Christmas and a happy new year. Have a wonderful time with your families, Peter Cook.

President – Peter Cook

Secretary – Robyn Fague

Treasurer – Pat Middlemas

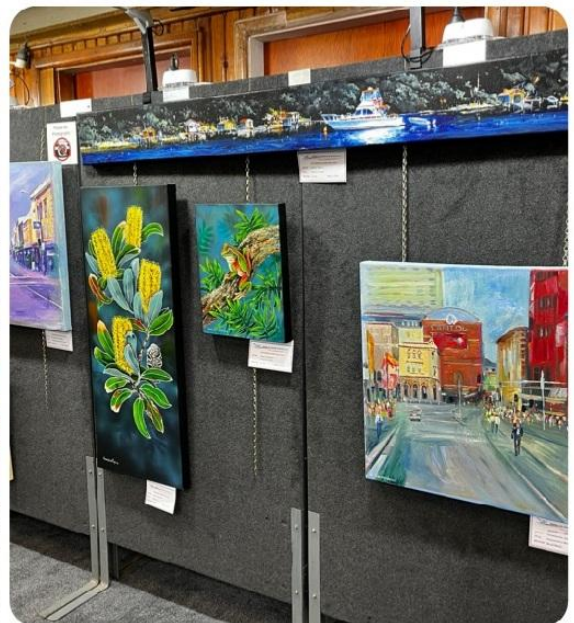
Peter.Cook58@icloud.com

oatley101sec@gmail.com

Oatley101treas@gmail.com

OATLEY 101 SOCIETY OF ARTISTS INC.

ARTWORKS AND ARTISTS ON DISPLAY AT THE DECEMBER 2025 EXHIBITION AND CHRISTMAS PARTY!



PIC•COLLAGE

OATLEY 101 SOCIETY OF ARTISTS INC.



OATLEY 101 SOCIETY OF ARTISTS INC.



OATLEY 101 SOCIETY OF ARTISTS INC.



OATLEY 101 SOCIETY OF ARTISTS INC.

THE WEDNESDAY VERY SOCIAL PAINTERS CHRISTMAS LUNCH !



OATLEY 101 SOCIETY OF ARTISTS INC.

En Plein Air Adventure

Barangaroo

En Plein Air Thursday 13/11/25

Another fabulous day with glorious weather. Most of the thirteen artists Carol, Gloria, Katherine, Louise, Manu, Michael, Mina, Raquel, Robyn, Steven, Tanner, Trish, Valerie, wandered off around the walking path of Barangaroo's Reserve. There was plenty of views of the harbour including Goat Island, East Balmain, sandstone boulders, etc. It was pretty warm though and essential to find some nicely shaded spots.



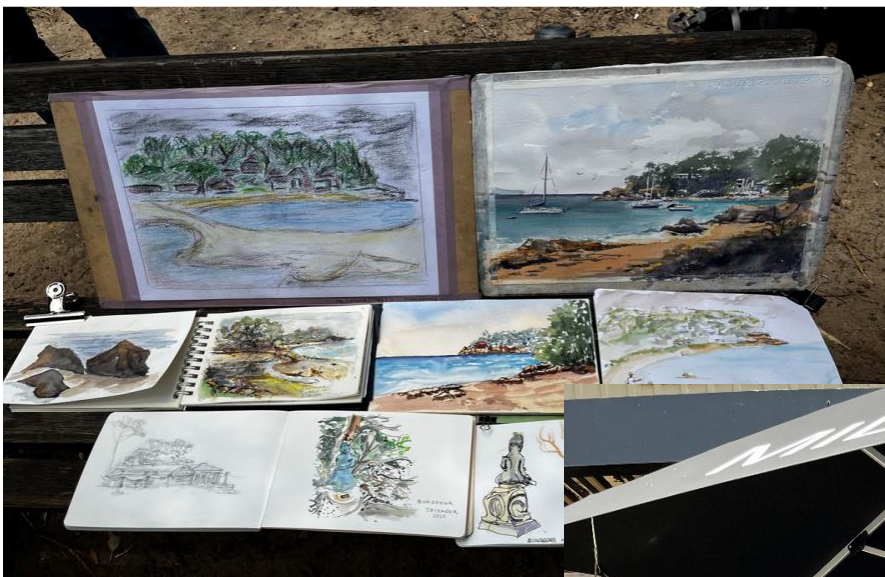
OATLEY 101 SOCIETY OF ARTISTS INC.

En Plein Air Report

Bundeena by ferry from Cronulla.

While some Ferried from Cronulla, some drove. The Weather Gods smiled upon us again. Gunyah Beach was a favourite view of some, while others enjoyed views along Horderns Beach, houses, rocks, "Spring" the Mermaid & Angophora trees. We, all seven of us, Carol, Fran, Katherine, Mina, Robyn, Steven, Trish then enjoyed lunch and conversation at "The Earth Things" cafe till the heat beat us.

Join us 12/2/26 at Audley Weir (always a favourite location).



OATLEY 101 SOCIETY OF ARTISTS INC.

EXECUTIVE

President

Peter Cook
Peter.Cook58@icloud.com
0408619701

Vice President

Shirley Hagarty
shirleyhagarty042@gmail.com
9533 4037

Treasurer

Pat Middlemas
Oatley101treas@gmail.com
0418 620 037

Secretary

Robyn Fague
oatley101sec@gmail.com

GENERAL COMMITTEE

Robyn Reid
Michael Dunn
Ann McIntyre
Sue Lowe
Lou Murray
Lyn McDonald

PUBLIC OFFICER

Robyn Riley

CASS DELEGATES

Shirley Hagarty
Diana Garth

ACTIVITY CO-ORDINATORS

Monday night Life Drawing

Christine Miller Phone: 0434 195 098
email: christinetheresemiller@gmail.com

Wednesday Social Painters

Shirley Hagarty 0418 480 533
shirleyhagarty042@gmail.com

Thursday Portrait Group

Marlene Weaver 0419481743

En Plein Air Painters

Robyn Reid 0409 449 973



St George Maso's Club, 86 Roberts Avenue, Mortdale www.masos.com.au

PRD Oatley Real Estate, 24 Oatley Avenue Oatley www.prd.com.au/oatley

Robert Oatley Wines and our friends: Elim Cafe, Oatley, Echos Clothing Oatley, O'Connors Pharmacy Oatley, Eckersleys Art & Craft Taren Point, Diana's Pharmacy Peakhurst Heights, Visual Arts Arncliffe. Cafe on Pindari, Peakhurst Heights.